



FOND DU LAC COUNTY

SHERIFF

PRESS RELEASE

COMMUNITY NOTIFICATION MEETING

Tuesday, June 7, 2011 - 6:00 PM

Oakfield Community Center

130 N Main St, Oakfield

(see agenda on back page)

Sheriff Mylan C. Fink Jr.

Release of Sex Offender: Charles E. Buckarma M/W 07/25/1988

Charles E. Buckarma

Birthday: July 25, 1988

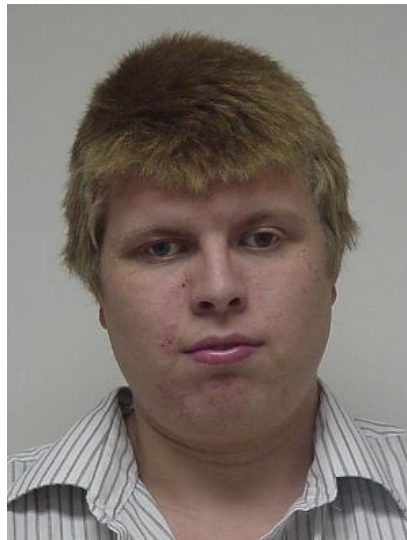
Race: White

Height: 5'11" Weight: 190

Hair: Blonde

Eyes: Blue

Tattoos: None



2007 Photo



2011 Photo

Charles E. Buckarma: On 03/25/04 in Washington County Charles Buckarma was adjudicated of 3rd Degree Sexual Assault. The victim was a 16 yr. old male who was known to him. He has an offending history that includes similar behaviors.

Charles Buckarma will be residing at N2962 Oaklane Rd., Byron WI. He is not under Department of Corrections Probation or Parole supervision. He will be residing in the aforementioned supervised living facility (adult family home) and will be closely monitored 24/7 by facility staff.

The Fond du Lac County Sheriff's Office will distribute flyers to Buckarma's neighborhood before his release. The Sheriff's Office will also be notifying schools and other community partners who operate in the area of release.

(over)

Contact Information:

Fond du Lac County Sheriff's Office: Emergency Dial 911 - Non Emergency: 929-3390

Information on the Internet: <http://www.fdlsheriff.com>

<http://offender.doc.state.wi.us/public/>

Additional Sex Offender Information:

As of the date of this bulletin, there are 21,866 registered sex offenders in the State of Wisconsin and 233 registered offenders in Fond du Lac County.

**COMMUNITY NOTIFICATION MEETING
AGENDA**

Welcome and Introduction

Lt. Cameron McGee – Fond du Lac Co. Sheriff's Office

Sex Offender Registration and Community Notification

Nichole Hall

Sex Offender Registration Specialist
Wisconsin Department of Corrections

Offense History

Lt. Cameron McGee

Supervision

Facility Staff

Protection Behaviors

Nichole Hall

Questions and Answers

Panel members will answer questions submitted in written form (3x5 cards provided).

Panel members will be available after the meeting to answer additional questions.